

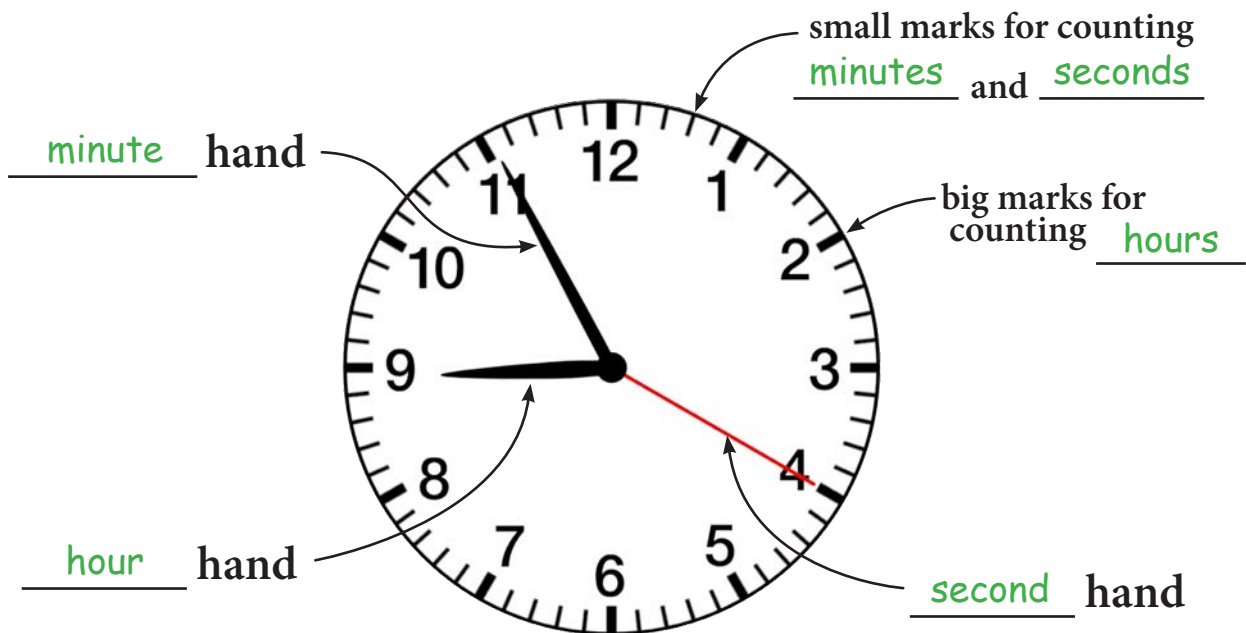
Units of Time & Parts of a Clock

TT 1

Instructions: Use what you learned in the video to answer these questions. (Some of the questions require basic arithmetic.)

- 1 How many hours are in one day? 24
- 2 How many hours are in half a day? 12 $24 \div 2 = 12$
- 3 How many minutes are in one hour? 60
- 4 How many minutes are in half an hour? 30 $60 \div 2 = 30$
- 5 How many minutes are in one-quarter of an hour? 15 $60 \div 4 = 15$
- 6 How many seconds are in one minute? 60
- 7 How many hours are in two days? 48 $24 \times 2 = 48$
- 8 How many minutes are in two hours? 120 $60 \times 2 = 120$

Instructions: Label the parts of the clock.



Hours & Minutes - Set 1

TT 2

Instructions: Tell what time each clock is showing. (You don't need to say if it's a.m. or p.m.)

1 9 : 15



2 7 : 30



3 1 : 50



4 12 : 10



5 5 : 00



6 10 : 45



7 11 : 15



8 3 : 35



9 12 : 40



Hours & Minutes - Set 2

TT 3

Instructions: Tell what time each clock is showing. (You don't need to say if it's a.m. or p.m.)

1 9 : 00



2 7 : 10



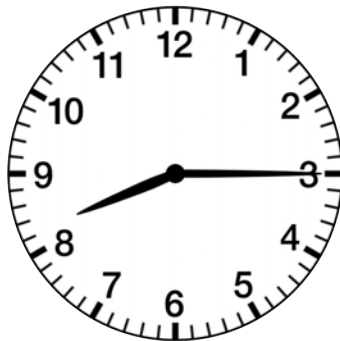
3 6 : 20



4 2 : 30



5 8 : 15



6 1 : 00



7 4 : 05



8 6 : 55



9 2 : 45



Hours, Minutes & Seconds - Set 1

TT 4

Instructions: Tell what time each clock is showing. (You don't need to say if it's a.m. or p.m.)

1 1 : 45 : 15



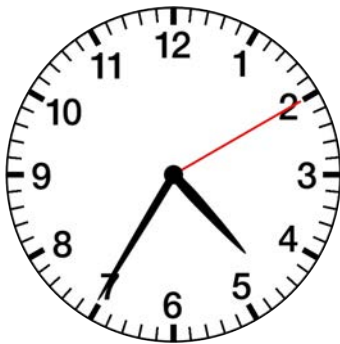
2 2 : 25 : 00



3 3 : 18 : 40



4 4 : 35 : 10



5 5 : 50 : 12



6 6 : 30 : 42



7 7 : 59 : 05



8 9 : 10 : 30



9 12 : 05 : 20



Hours, Minutes & Seconds - Set 2

TT 5

Instructions: Tell what time each clock is showing. (You don't need to say if it's a.m. or p.m.)

1 2 : 40 : 25



2 10 : 12 : 30



3 4 : 05 : 30



4 3 : 25 : 50



5 7 : 17 : 00



6 7 : 44 : 03



7 12 : 47 : 12



8 3 : 33 : 15



9 2 : 45 : 00



A.M. or P.M. ?

Instructions: Tell what time each clock is showing and use the clues provided to decide if it's A.M. (before noon) or P.M. (after noon).

1



Clue: The school bus is waiting to pick you up.

8 : 30 a.m.
 p.m.

2



Clue: You just got back from lunch break.

1 : 10 a.m.
 p.m.

3



Clue: Traffic jam! Everyone is going home from work.

5 : 20 a.m.
 p.m.

4



Clue: The house is very quiet. No one is awake yet.

4 : 15 a.m.
 p.m.

5



Clue: You're brushing your teeth before bedtime.

9 : 35 a.m.
 p.m.

6



Clue: The sun almost to its highest spot in the sky.

11 : 45 a.m.
 p.m.